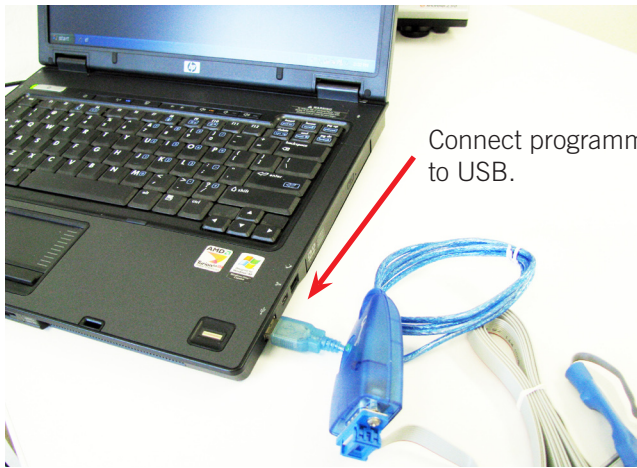


PROGRAMMING GUIDE

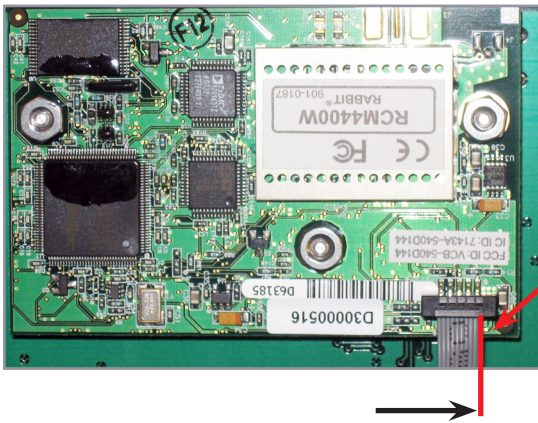
DELTA T PRO
CONTROL UNIT





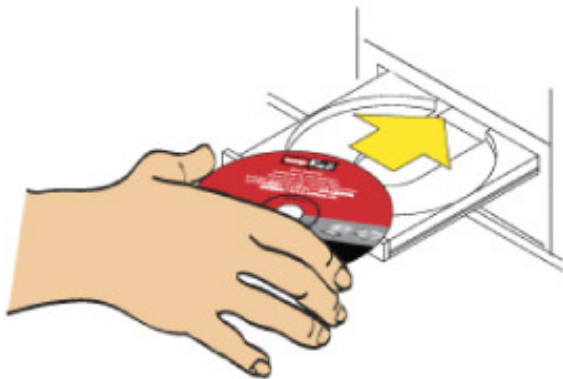
Connect programming cable to USB.

1. Prepare the laptop cable and control to be programmed. Ensure you are connecting the correct control for programming, i.e. WiFi or Ethernet.

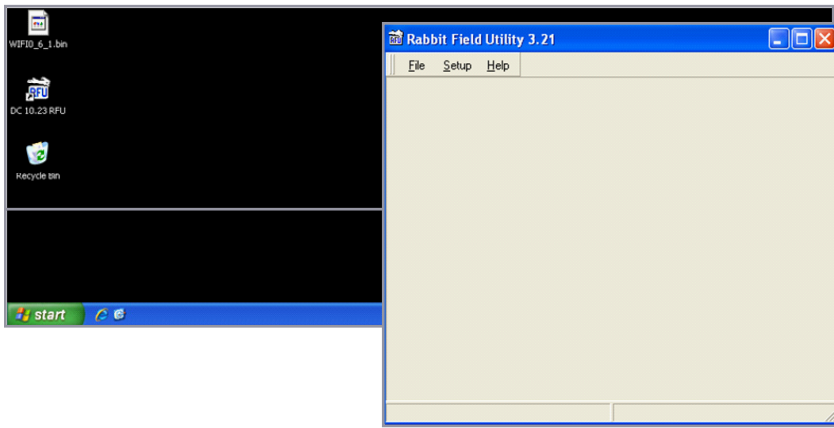


Connect programming cable to RCM module. Make sure the red line on the cable is closest to the edge.

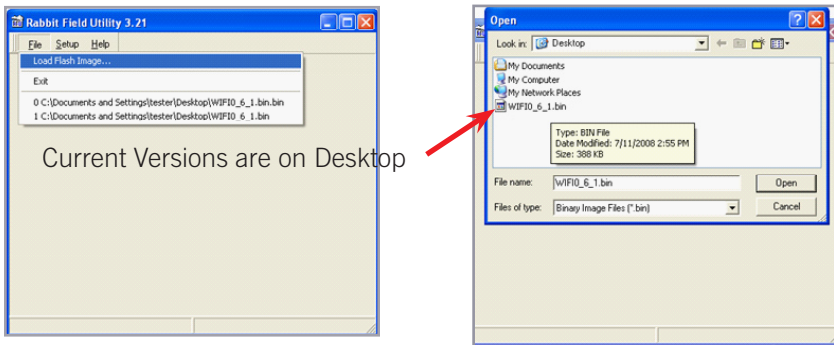
2. Make sure red slide voltage switch is set for 115 (if installed); connect power to controller. Ensure fuse is installed and shunt switches are in correct positions.



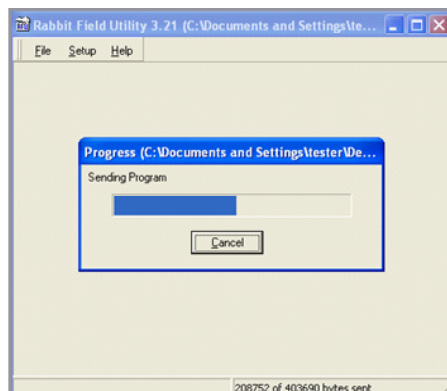
3. Insert the CD into the CD-Rom drive.
4. Unzip the software loading file "D:\DeltaTProRFU_SetupDC10_5.zip".
5. After the file is unzipped, double click the file "DeltaTProRFU_SetupDC10_5.exe" and follow the installation procedures.



6. Open Rabbit Field Utility



7. Go to “File”, then click “Load Flash Image...”
Search for current .bin file version for appropriate control module.



- 8. Double click on software and the program begins to load.
- 9. When finished, turn off control power, unhook programming cable.
- 10. Test control software by loading default IP into internet browser with laptop hooked into controller network.
IP address: 169.254.148.50

Heliodyne, Inc. • 4910 Seaport Avenue • Richmond, CA 94804
T: 510.237.9614 • F: 510.237.7018 • www.heliodyne.com
Sales Inquiries: sales@heliodyne.com

heliodyne
SOLAR HOT WATER